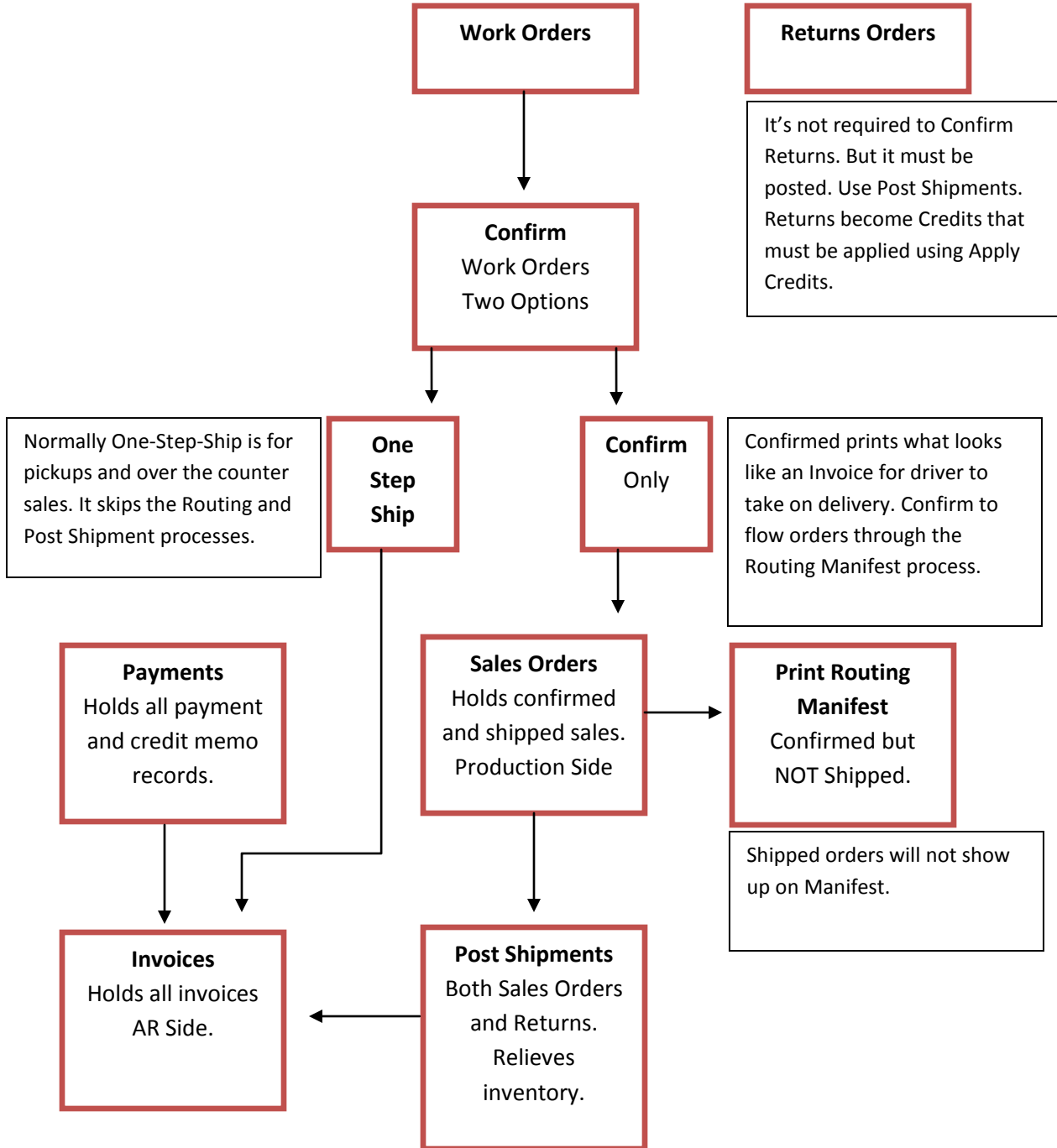


## ProFrame Work Order Process Flow Chart



Based on Three Files; Work Order File, Sales Order File and Invoice File. As work orders or back orders are confirmed it is removed from Work Order Files and added to the Sales Order File. A Sales Order is either Shipped or Not Shipped (Confirmed). If the One Step Ship option is used during the Confirm process, it is also removed from the Work Order Files and added to the Sales Order File as Shipped. (This type of transaction is also added to the Invoice Files waiting for payments). The Post Shipments process will change the status of Sales Orders from (Not Shipped – Confirmed) to Shipped and adds to the Invoice Files waiting for payments. Returns are recorded in the Sales Order file waiting to be Shipped using Post Shipments, returns become Credits. Creating a Sales Order is the equivalent of confirming a work order.